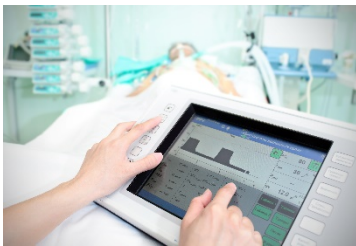


RFID APPLICATIONS IN MEDICAL ENVIRONMENT

RFID systems are already in widespread use in hospitals, for example in access control applications. Beyond that, contactless identification methods are used by medical staff during ward rounds, and for documentation purposes, which can lead to real cost reduction. One domain, that should not be disregarded, is the use of RFID to help patients feel more comfortable during their stay at the clinic.



Multi-media terminal in hospital, billing via contactless payment.



Electronic health record on multi-media terminal, accessed by RFID identification.

PRODUCT



Elatec recommends the TWN4 family for medical equipment applications. For more info: www.elatec.com/case-medical

SITUATION

Patients at medical facilities are offered an increasing number of chargeable services, such as vending machines, internet access, watching TV etc. Yet there are various reasons i.e. hygiene or theft, why many hospitals don't want their patients to carry cash.

RFID is very well suited both for contactless payments and for person identification. However, if each system uses a different RFID standard, separate and independent RFID eco-systems emerge.

CHALLENGE

On one hand, for device manufacturers this is a challenge since they need to develop a different device version for every single application. On the other hand, end users who have access to multiple RFID eco-systems have to carry multiple RFID tags in order to identify themselves at each different application.

SOLUTION

Manufacturers of multi-media terminals can integrate proximity readers in their devices. Thus patients as well as physicians are able to identify themselves on the terminal but use it for different purposes. This makes many administrative tasks like carrying around patient's documentation obsolete. This leads to real time and process improvements along with increased security for patient records.

By integrating Elatec's all-in-one multi-technology multi-frequency RFID readers, a multi-media terminal manufacturer can concentrate on their main business without the need to develop a contactless identification interface for their machines. Since Elatec offers its products with worldwide approvals, an integrator can use these approvals in order to massively speed up the approval of their end product.

